

The operating status conditions of the printer and the amounts of inks used can be monitored remotely. PICT allows you to do other work during printing, helping you to perform operations in a planned manner.

You can also schedule maintenance and preparation for ink refilling in advance.



■ Software

Raster Link 7

- Combination of upgraded usability and functionality
- Improves reproducibility of special effects (such as transparency) of PDF data
 - Increases RIP processing speed of PDF data by 25% on average
 - Prints out the variable data by Variable print function
 - Displays frequently used setting and pop-up windows

■ Specifications

	CJV200-160	CJV200-130	CJV200-75
Item			
Print head	On-demand piezo head		
Print resolution	Y:600, 900, 1200dpi X:600, 1200dpi		
Head gap	2levels by manual (1.5mm / 2.0mm)		
Ink	Type	SS21, SS22, BS4	
	Color	4color(C,M,Y,K) 8color(C,M,Y,K,Lc,Lm,Lk,Or)	
	Capacity	440ml	
Ink circulation	Yes		
Max.Load capacity	1620mm(63.8in)	1371mm(54in)	810mm(31.9in)
Max.Printable width	1610mm(63.4in)	1361mm(53.5in)	800mm(31.5in)
Media roll outer diameter	φ180mm or less (7.1in)		
Media roll weight	25kg (55.1 lb.) or less		
Media roll inside diameter	2 / 3 inch		
Cut function	Cut speed / acceleration	Speed:Max,300 mm/s Acceleration:Max, 0,5G	
	Cut pressure	10-450gf	
	Cutter response times	10 times / sec	
	Cut speed / acceleration	±0.2 mm (Excluding expansion and contraction of film due to temperature)	
Interface	Ethernet 1000 BASE-TT(Recommended) / USB 2.0 Hi-speed		
Power	AC(100-120V/200-240V±10%)×2 50/60Hz±1Hz		
Power consumption	Max.1320W x2 / 4,5W or less (Sleep mode)		
Operational environment	Temperature	20 - 30 degC (68-86 degF)	
	Humidity	35 - 65% Rh (Non condensing)	
	Guaranteed accuracy temperature	20 - 25 degC (68 - 77 degF)	
	Dust level	Equivalent to general office	
Dimensions (WxDxH)	2,770mm × 748mm × 1,370mm (109 x 29 x 54 in)	2,520mm × 748mm × 1,370mm (99 x 29 x 54 in)	1,960mm × 748mm × 1,370mm (77 x 29 x 54 in)
Weight	140kg(309lb)	130kg(287lb)	105kg(231lb)

■ Ink

Item	Color	Item No.	Remarks
BS4 600ml Ink Pack	Cyan	BS4-C-60	OPT-J0361 ECO CASE 4 is required for setup *2L ink pack is also available OPT-J0364 MBIS3 is required for setup
	Magenta	BS4-M-60	
	Yellow	BS4-Y-60	
	Black	BS4-K-60	
SS22 440ml Cartridge	Cyan	SS22-C-44	*1L ink pack is also available OPT-J0364 MBIS3 is required for setup
	Magenta	SS22-M-44	
	Yellow	SS22-Y-44	
	Black	SS22-K-44	
	Light Cyan	SS22-LC-44	
	Light Magenta	SS22-LM-44	
	Orange	SS22-OR-44	
	Light Black	SS22-LK-44	
SS21 440ml Cartridge *Scheduled for support in March 2025	Cyan	SPC-0501C	*2L ink pack is also available OPT-J0364 MBIS3 is required for setup
	Magenta	SPC-0501M	
	Yellow	SPC-0501Y	
	Black	SPC-0501K	
	Light Cyan	SPC-0501LC	
	Light Magenta	SPC-0501LM	
	Orange	SPC-0501Or	
Light Black	SPC-0501Lk		

■ Options

Item No.	Item	Image
OPT-J0422	NCU OPT	
OPT-J0364	MBIS3 bulk supply unit	
OPT-J0576	MBIS BKT OPT	
OPT-J0502	Level foot OPT	
OPT-J0578	160 cover OPT	
OPT-J0579	130 cover OPT	
OPT-J0580	75 cover OPT	
OPT-J0361	ECO CASE4	

•Some examples shown in this catalog are artificial renderings. •Specifications, designs and dimensions shown in this catalog may be subject to change without notice for technical improvements. •The corporate and merchandise names in this catalog are the trademarks or registered trademarks of the respective corporations. •Inkjet printers use extremely fine dots, so colors may vary slightly after replacement of print heads. •Also note that when using multiple printer units, colors could vary slightly from one unit to another due to slight individual differences. •Please note that descriptions and data in this catalog are as of September 2024

Mimaki MIMAKI USA, INC.
mimakiusa.com 150 Satellite Blvd NE, Ste. A, Suwanee, GA 30024
Tel. 888-636-0491

Los Angeles, California
888-530-3987
Milwaukee, Wisconsin
414-367-2661

Rockaway, New Jersey
855-897-2254
Irving, Texas
888-530-3987

Toronto, Canada
905-738-3913
Mexico, South America,
Central America & Caribbean
888-636-0491

american print consultants
Authorized USA Dealer

FIND US ON:

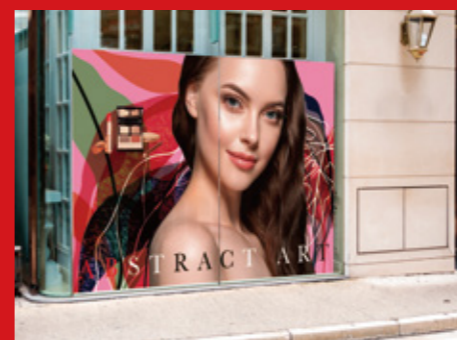
80 Industrial Drive
Chambersburg, PA 17201
Ph: (855) 927-2465
Visit us at www.apcink.com
MAS-BRO-EQUIP-030

DB10386-01

Mimaki
For SignGraphics

Print & Cut Inkjet Printer **CJV200 series**
-160 / -130 / -75

In Pursuit of High Image Quality and Ease of Use for Everyone





Overwhelming Beauty

The CJV200 is equipped with a single print head of "330 Engine" in Mimaki's flagship printer. The technology of precise control of a minimum 3pl ink drop and the print head that delivers high-density prints, even at high speeds, resulting in overwhelmingly beautiful printing.



Practical 17.0 m²/h



Easy for Everyone

Simple Design

Single Print Head - Simple Maintenance

Single print head system contributes less cleaning time and adjustment time. The simple design allows you to work quickly and easily.



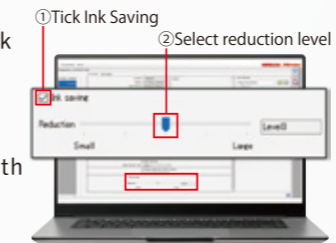
Wide Open Cover for Easy Access



Up-Facing Control Panel for Easy View

Reduce Ink Consumption with Just 2 Clicks Ink Saving Function

Anyone can easily reduce ink consumption without technical expertise. This function is available with any media and profiles.

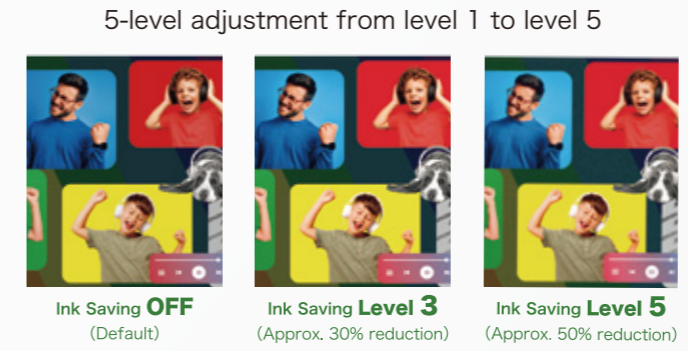
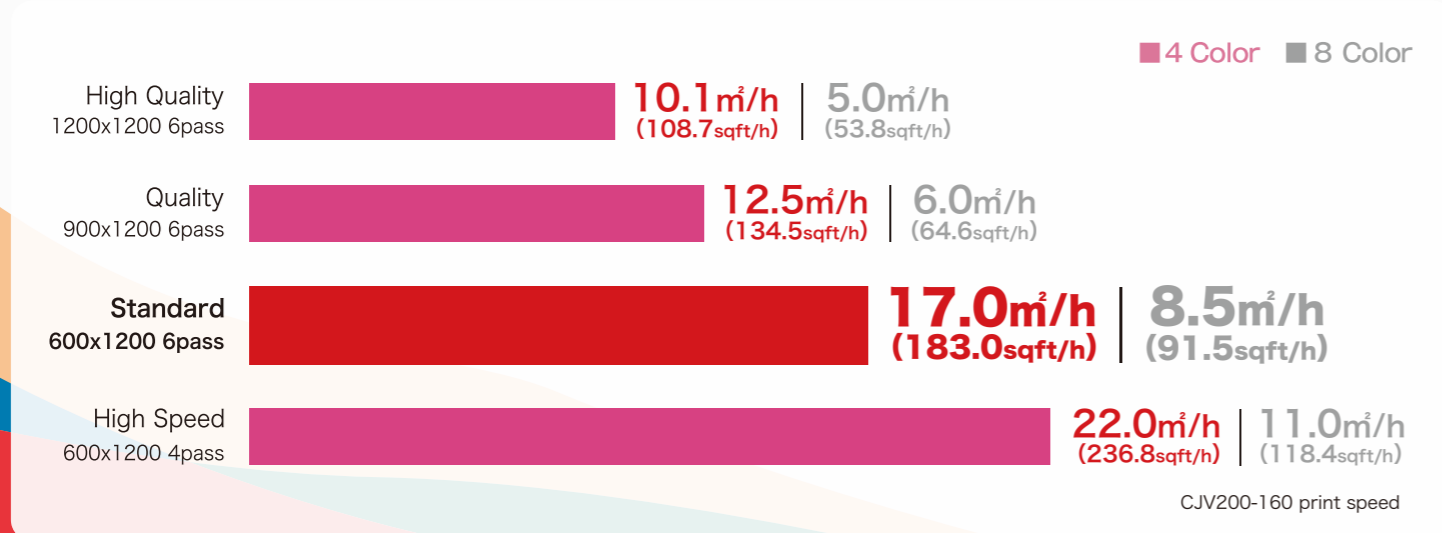


Easy and Precise Automatic Set Up

Automatically performs necessary adjustment at the media setup to ensure optimal image quality at all times. (DAS | Dot Adjustment System)



Reliable Productivity even during Peak Season



Simple Design Software

SimpleCreate is software that allows you to create labels, POP, stickers, and other designs without a need of DTP software. It provides simple tools for creating designs and cutlines, as well as direct output from the software.

