

Technical Data Sheet



Ultra Jet DLE-JX

LED-curable inkjet ink, especially developed as an alternative for the Mimaki LUS120.



Key performance factors

- Chemical compatibility
- LUS120 alternative
- LED-curable
- High-grade pigmentation
- Manufactured without the use of NVC / TPO
- Including LUS120 chips

Field of application

Substrates

The Ultra Jet DLE-JX substrate range includes:

- Rigid materials such as acrylics (PMMA)
- Rigid PVC
- Aluminium composite panels (like Dibond®)
- Polycarbonate
- Flexible substrates such as self-adhesive films, backlit or PVC banner material

Compatible printers

Ultra Jet DLE-JX is suitable for the following printers:

- Mimaki JFX series
- Mimaki UJF series
- Mimaki SIJ320UV
- Mimaki UJV55

Ink properties

Characteristics	DLE-JX
Colour Gamut	+++
Flexibility	+++
Pigmentation	+++

Curing

Ultra Jet DLE-JX is a LED-curable ink with best curing at a wavelength of 395 nm. Final adhesion and chemical resistances are achieved after 24 hours.

Generally, the ink curing is influenced by the dryer's design, age, and performance, as well as the number of lamps and the ink deposit. Additionally, the color shade, the substrate, and the printing speed also have an impact on the curing process.

Light fastness

Only pigments of high fade resistance are used for the DLE-JX range. All basic shades are suited for a 2-year vertical outdoor exposure, referred to the middle European climate and suitable substrates.



Colour Range

Basic Shades

- 428 Yellow
- 434 Light Magenta
- 438 Magenta
- 455 Light Cyan
- 459 Cyan
- 489 Black
- 170 White

Auxiliaries

- DI-UR Cleaner
- DI-UR 3 Cleaner
- P 2 Primer

Cleaner DI-UR is used to clean all ink-carrying components when changing inks and is perfectly adjusted to the ink formulation.

Cleaner DI-UR 3 is the preferred option for rinsing, cleaning, or short-term soaking of print heads and other ink-carrying components. Due to its higher viscosity, it is particularly suitable for printers with automatic cleaning systems.

Primer P 2 is used for manual precleaning and pre-treatment of PP substrates and metals. In addition, adhesion is improved on powder coatings.

Shelf Life

Shelf life depends very much on the formula/ reactivity of the ink system as well as the storage temperature. For an unopened ink container it is **1 year**.

We recommend our products to be stored in a dark, dry and well-ventilated surrounding, providing an ambient temperature of 5 °C - 35 °C. Please protect from heat and direct sunlight. If storage conditions do not comply with this recommendation, the shelf life is no longer guaranteed.

Change-Over

Switch & Print: Changing to Ultra Jet DLE-JX does not require preliminary or additional cleaning of printer parts. Simply replace the empty OEM cartridges one after another.

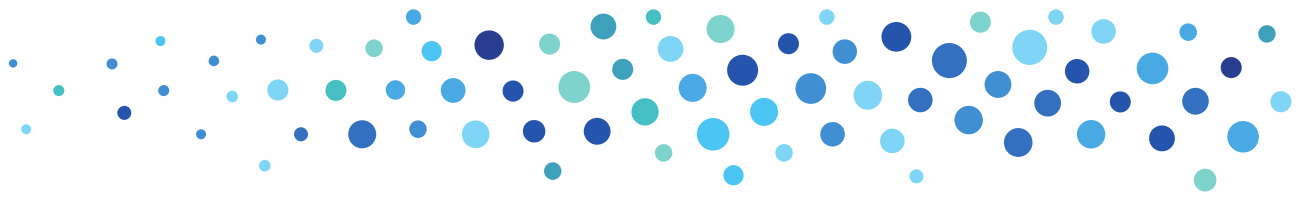
In case of changing from a third-party supplier, it is our advice to run an additional cleaning cycle with the third-party cleaner before repeating this procedure with the Marabu cleaner DI-UR. It is recommended to exchange the dampers and any other parts, if necessary.

Recommendation

To ensure trouble-free production, it is essential to observe and comply with the instructions provided by Marabu and the machine manufacturer. We recommend replacing the ink filters annually and carrying out the regular care and maintenance intervals.

Note

Our technical advice whether spoken, written, or through test trials corresponds to our current knowledge to inform about our products and their use. This is not meant as an assurance for certain properties of the products nor their suitability for each application. You are, therefore, obliged to conduct your own tests with our supplied products to confirm their suitability for the desired process or purpose. The foregoing information is based on our experience and should not be used for specification purposes. All characteristics described in this Technical Data Sheet refer exclusively to the standard products listed under "Range", provided that they are processed in accordance with their intended use and only when used with the recommended auxiliaries. The selection and testing of the ink for specific applications is exclusively your responsibility. Should, however, any liability claims arise, they shall be limited to the value of the goods delivered by us and utilized by you with respect to any and all damages not caused intentionally or by gross negligence.



Labelling

For Ultra Jet DLE-JX and its auxiliaries, there are current Material Safety Data Sheets available according to EC regulation 1907/2006, informing in detail about all relevant safety data including labelling according to EC regulation 1272/2008 (CLP regulation). Such health and safety data may also be derived from the respective label.

Safety rules for UV printing inks

UV-inks contain some substances which may irritate the skin. Therefore, we recommend taking utmost care when working with UV-curable printing inks. Parts of the skin soiled with ink must be cleaned immediately with water and soap. Please read the notes on labels and safety data sheets.

Marabu – Colors made for life

- Certification according to international standards ISO 9001 and 14001
- Leading-edge research and development enable us design innovative products that meet the very latest real-world challenges of our customers
- Corporate responsibility - particularly environmental protection - is at the heart of our business. We have underlined this commitment by creating a dedicated department for product and environmental safety
- We systematically reduce hazardous substances in our products, making our standards among the highest in the industry
- Our international service and support network of subsidiaries and partners offers you support and advice wherever you are

Marabu GmbH & Co. KG

Asperger Strasse 4
71732 Tamm/Germany
Phone +49 7141 6910
info@marabu-inks.com
www.marabu-inks.com

