

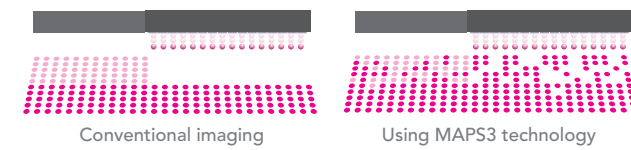
CJV150 features-at-a-glance

- Print resolutions up to 1440 dpi
- Automated cut and print functions
- Eco-solvent inks for indoor or outdoor prints including White, Orange and Silver metallic ink
- Dye-sub inks for textile and apparel applications
- Available in four printer sizes accommodating media up to 32, 43, 54 and 63 inch widths

HIGH QUALITY AT HIGHER SPEEDS

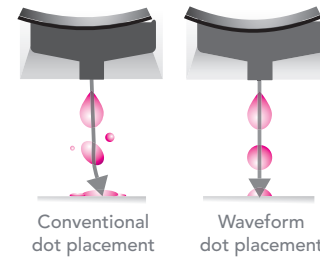
MAPS3 technology reduces the appearance of banding.

MAPS3 (Mimaki Advanced Pass System 3) prints passes in a gradation-like method by dispersing ink drops between passes. This unique imaging technology reduces banding, uneven ink drying and bi-directional stripes.



Superior inkjet technology provides precise, consistent high quality imaging.

Mimaki's Waveform inkjet technology controls the shape of the ink drop to an almost perfect sphere for precise placement. This results in sharper lines, text and image edges.

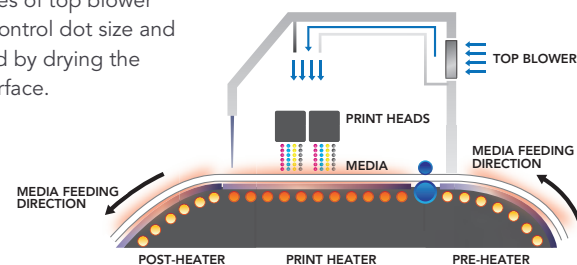


Smooth, high definition color with variable dot printing.

Variable dot printing produces a smoother, more natural gradation without the granular appearance seen in fixed-dot printing.

3-Way Intelligent Heater enhances ink performance.

Three built-in heater areas – pre, print, and post – provide accurate media heating for controlled and consistent ink adhesion and drying. A series of top blower fans control dot size and spread by drying the ink surface.



AUTOMATED CUT AND PRINT

Continuous register mark detection.

Through the RasterLink6 software, the CJV150 automatically detects where to stop and start a cutting pattern by detecting the printed register marks. The over-cut feature cross-cuts paths giving corners a crisp cut.



Versatility of cutting functions.

The "Cut and Print" function prevents common problems such as film separation and faulty cutting results by cutting the media before printing. The "Half Cut" function cuts the printed image while keeping the cut image on the media. The "Die Cut" function completely cuts the printed image from the media. "Perforation Cut" produces a series of half and die cuts.

INK VERSATILITY

Eco-solvent ink set includes expanded color choices.

The SS21 eco-solvent ink set now includes not only Light Magenta, Light Cyan and White, but Light Black for deeper dimensional monochromatic and grayscale imaging. The addition of Orange ink widens the color gamut for better accuracy in the color reproduction of food and solid PANTONE® colors.

A newly developed SS21 Silver ink is 1.5 times brighter than conventional silver inks for brilliant and beautiful mirrored effects. The silver ink can be used alone or mixed with other ink colors for a multitude of metallic effects.



Silver ink for metallic effects

Configure for eco-solvent or dye-sublimation printing.

CJV150 Series models can be configured for either eco-solvent printing for most sign and graphics applications or for dye-sublimation printing for textile and apparel transfer sublimation applications.



SS21 Eco-solvent ink set: 10 colors



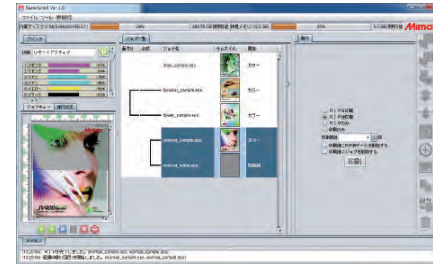
Sb53 Sublimation ink set: 6 colors

Optional Mimaki Bulk Ink System (MBIS3).

The CJV150 Series printers can be configured with Mimaki's Bulk Ink System featuring economical 2L ink packs.

RasterLink6

Intuitive and user-friendly operation



Easy-to-follow icons enable intuitive, user-friendly operations and easy monitoring of printing progress.

SOPHISTICATED RIP SOFTWARE MAXIMIZES PERFORMANCE

Simultaneous layer printing.

RasterLink6 software enables simultaneous three-layer printing for two-sided viewing – color > white > color, or for white over/underprinting.

Simplify RIP operations.

The "Register as Favorite" feature saves regularly used RIP layouts and operations in a single window for quick retrieval.

Easy metallic color matching.

A swatch palette of 648 metallic colors is included and can be easily selected from Adobe® Illustrator® software.

CJV150 SERIES SPECIFICATIONS | INKS

Item	Specifications	
Print Head	On-demand piezo head	
Print Resolution	300, 540, 720, 1440 dpi	
Ink	Type	Eco-solvent: SS21 (C, M, Y, K, W, Lc, Lm, Lk, Or, Si)
		Water-based sublimation: Sb53 (Bl, M, Y, K, W, Lbl, Lm)
	Ink Supply System	SS21: 440ml cartridge; W & Si - 220ml cartridge
	Sb53: 440ml cartridge	
	Ink Circulation System: Mimaki Circulation Technology (MCT) for White ink only	
Maximum Print Width	CJV150-75: 31.4 in. (800mm)	CJV150-107: 42.9 in. (1,090mm)
	CJV150-130: 53.5 in. (1,361mm)	CJV150-160: 63.3 in. (1,610mm)
Media	Maximum Width	CJV150-75: 31.8 in. (810mm) CJV150-107: 43.1 in. (1,100mm)
	Maximum Thickness	1.0 mm or less
	Roll Weight	88 lb. (40 kg) or less
Cut Speed	11.8 inches (30 cm) per second max.; 1G acceleration max.	
Certifications	VCCI class A, FCC class A, ETL UL 60950 CE Marking (EMC, Low voltage, and Machinery directive) CB, RoHS REACH and EnergyStar, RCM	
Interface	USB2.0	
Input Power Supply	Single-phase (AC 100-120V / AC 220-240V) x2	
Power Consumption	1440W x 2 or less (100V) 1920W x 2 or less (200V)	
Operational Environment	Temperature: 59°F - 86°F	
	Humidity: 35% - 65% Rh (non-condensing)	
Dimensions (WxDxH)	CJV150-75: 77" x 28" x 55"	CJV150-107: 89" x 28" x 55"
	CJV150-130: 99" x 28" x 55"	CJV150-160: 109" x 28" x 55"
Weight	CJV150-75: 278 lb.	CJV150-107: 313 lb.
	CJV150-130: 346 lb.	CJV150-160: 370 lb.

Item	Color	440ml Cartridge	2L Bulk Pack with Optional MBIS3
SS21 Eco-solvent	Cyan	SPC-0501C	SPC-0588C
	Magenta	SPC-0501M	SPC-0588M
	Yellow	SPC-0501Y	SPC-0588Y
	Black	SPC-0501K	SPC-0588K
	Light Cyan	SPC-0501LC	SPC-0588LC
	Light Magenta	SPC-0501LM	SPC-0588LM
	Light Black	SPC-0501LK	SPC-0588LK
	Orange	SPC-0501Or	SPC-0588Or
	White	SPC-0504W-2	220ml Cartridge Only
		Silver	SPC-0504Si
Sb53 Water-based Sublimation	Blue	Sb53-BL-44	Sb53-BL-2L
	Magenta	Sb53-M-44	Sb53-M-2L
	Yellow	Sb53-Y-44	Sb53-Y-2L
	Black	Sb53-K-44	Sb53-K-2L
	Light Blue	Sb53-LBL-44	Sb53-LBL-2L
	Light Magenta	Sb53-LM-44	Sb53-LM-2L

Ink Configurations

SS21 Eco-solvent	M C Y K K Y C M
	M C Y K Lc Lm Lk Or
	M C Y K Lc Lm W Si
Sb53 Water-Based Sublimation	M Bl Y K K Y Bl M
	M Bl Y K Lbl Lm Bl M

Some of the samples in this brochure are artificial renderings. Specifications, design and dimensions stated may be subject to change without notice (for technical improvements, etc.)

The corporate names and merchandise names written in this brochure are the trademarks or registered trademarks of their respective companies.

Inkjet printers print using extremely fine dots, so colors may vary slightly after replacement of the printing heads. Also note that if using multiple printer units, colors could vary slightly from one unit to another due to slight individual differences.

CJV150 SERIES CUT & PRINT



Mimaki | mimakiusa.com

Mimaki USA, Inc. | 150-A Satellite Blvd. Suwanee, GA 30024 | 888-530-4021 | info@mimakiusa.com

© 2014 Mimaki USA, Inc. All rights reserved. Ver. 1.0

Mimaki



POSTERS & SIGNAGE



APPAREL TRANSFERS

Go beyond expectations.

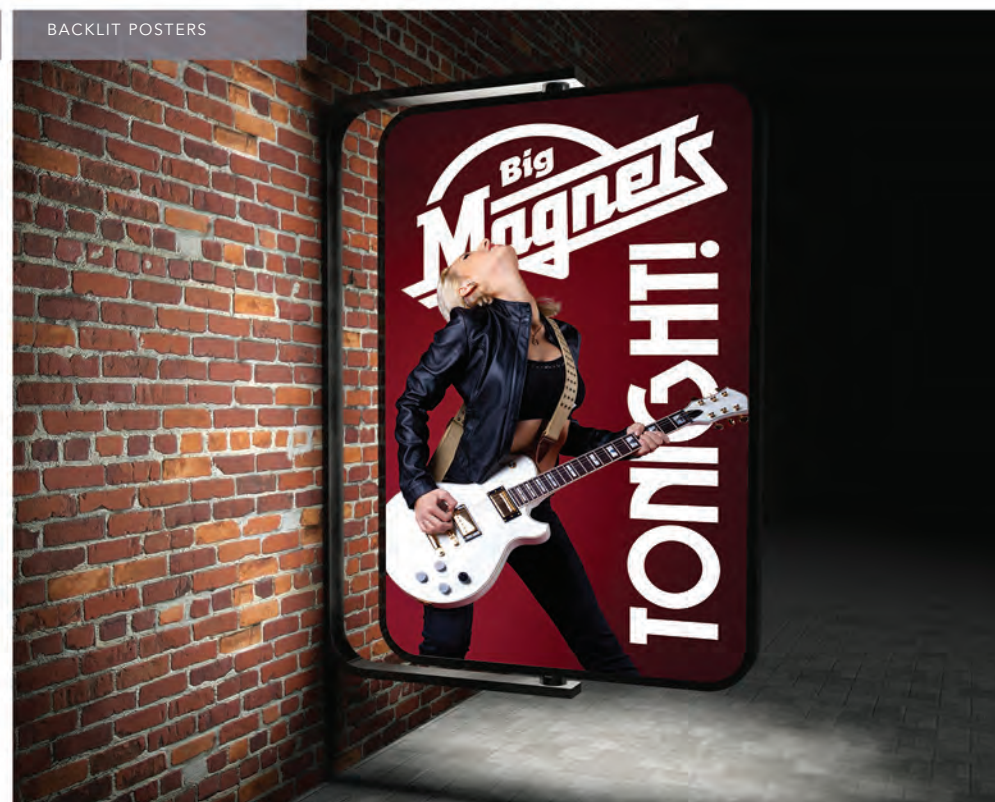
Metallic decals? Backlits? Wearable art? Whatever the request you'll grow your business with the new Mimaki CJV150 Series cut and print devices. Built on the proven Mimaki JV Series platform, these roll-based printers include new innovative technologies for faster throughput and add on-board cutting. You can produce all your current work at higher quality, with a shorter turn around and at a lower cost per print. And you can offer new products such as labels or vehicle markings – or enhanced items using Silver or metallic colors – all from one device. With the Mimaki CJV150 Series cut and print models, you gain the application versatility to confidently take on new business.



DIE-CUT DECALS & STICKERS with Silver & Metallic accents



DIE-CUT LABELS



BACKLIT POSTERS

Go beyond conventional.

Mimaki CJV150 Series cut and print devices go beyond extraordinary to deliver a wide range of applications. Eco-solvent inks in a variety of colors – including Silver – and advanced printing technologies means you can produce nearly anything in a single unit that fits your workflow. Precision cutting capability gives you the ability to deliver custom and short-run items such as labels, T-shirt transfers or package prototypes. With the Mimaki CJV150 Series printers' superb quality, color fidelity, and flexibility – plus cutting capability – you'll go beyond the expected to increase your business and deliver more than your customers can imagine.

MEDIA SIZE VERSATILITY

The CJV300 Series models are available in four versatile sizes handling maximum media widths from 32 to 63 inches. Now there's a size for every type of cut and print application.

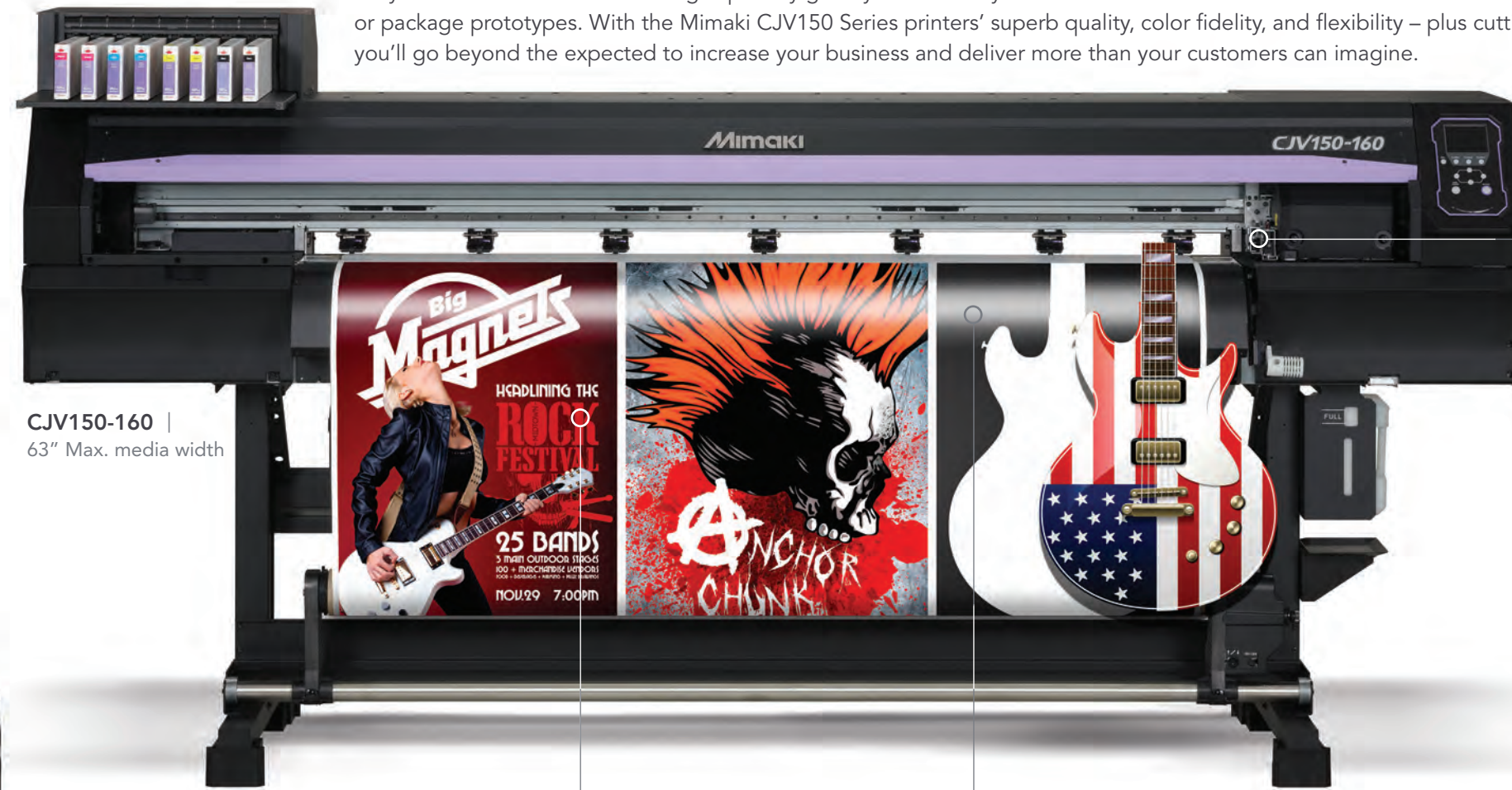
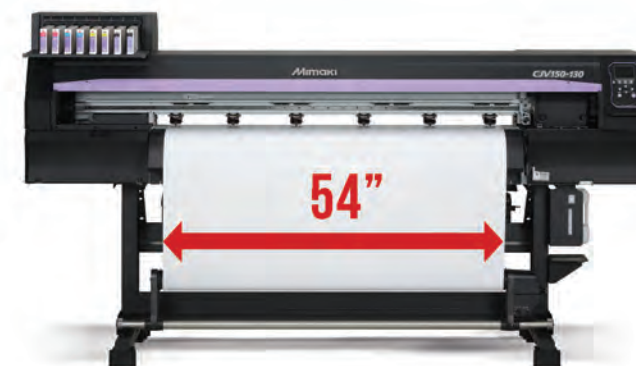
CJV150-75 | 32" Max. media width



CJV150-107 | 43" Max. media width



CJV150-130 | 54" Max. media width



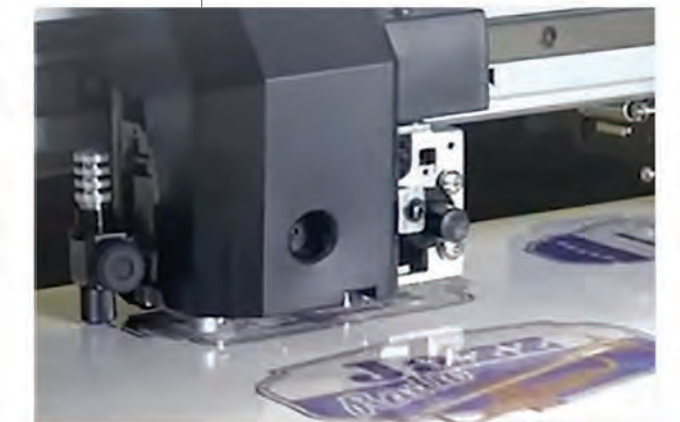
CJV150-160 | 63" Max. media width



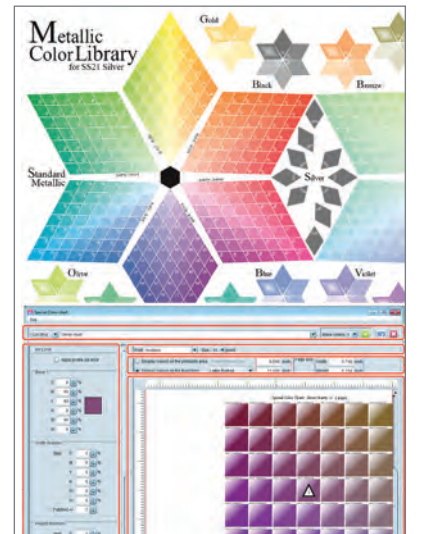
MAPS3 BRINGS IMAGES TO LIFE
The unique imaging technology of the MAPS3 (Mimaki Advanced Pass System 3) practically eliminates banding at higher speeds by employing a proprietary dot randomized pattern throughout the pass modes.



CONTINUOUS CROP MARK DETECTION
The advanced features in Rasterlink 6 enable the CJV150 to automatically detect all printed crop and register marks, calibrate the cutter, and precisely indicates where to start and stop each cutting sequence.



RANGE OF CUTTING FUNCTIONS
The fully automatic and versatile contour cutter is capable of performing full, half-, and perforation-cutting. The versatile system gives operators the ability to pre-cut or post-cut prints, optimizing throughput while reducing waste and defects common to many print/cut applications.



EXPANSIVE METALLIC LIBRARY
The SS21 metallic ink library, utilizing Silver ink, contains 648 colors which can be combined to print a near limitless color array through the RasterLink6 RIP software. This metallic color library, gives designers and operators the ability to create dazzling colors and effects simply by selecting specific metallic colors from an Adobe® Illustrator® swatch pallet.